

# Fresno State Digital Repository

The Fresno State Digital Repository (FSDR) is the open access repository for the intellectual and cultural capital of California State University, Fresno.

It collects, preserves, and provides access to the scholarly, creative, instructional, and administrative work of campus faculty, staff, and in some cases students.

The FSDR is divided into four sections:

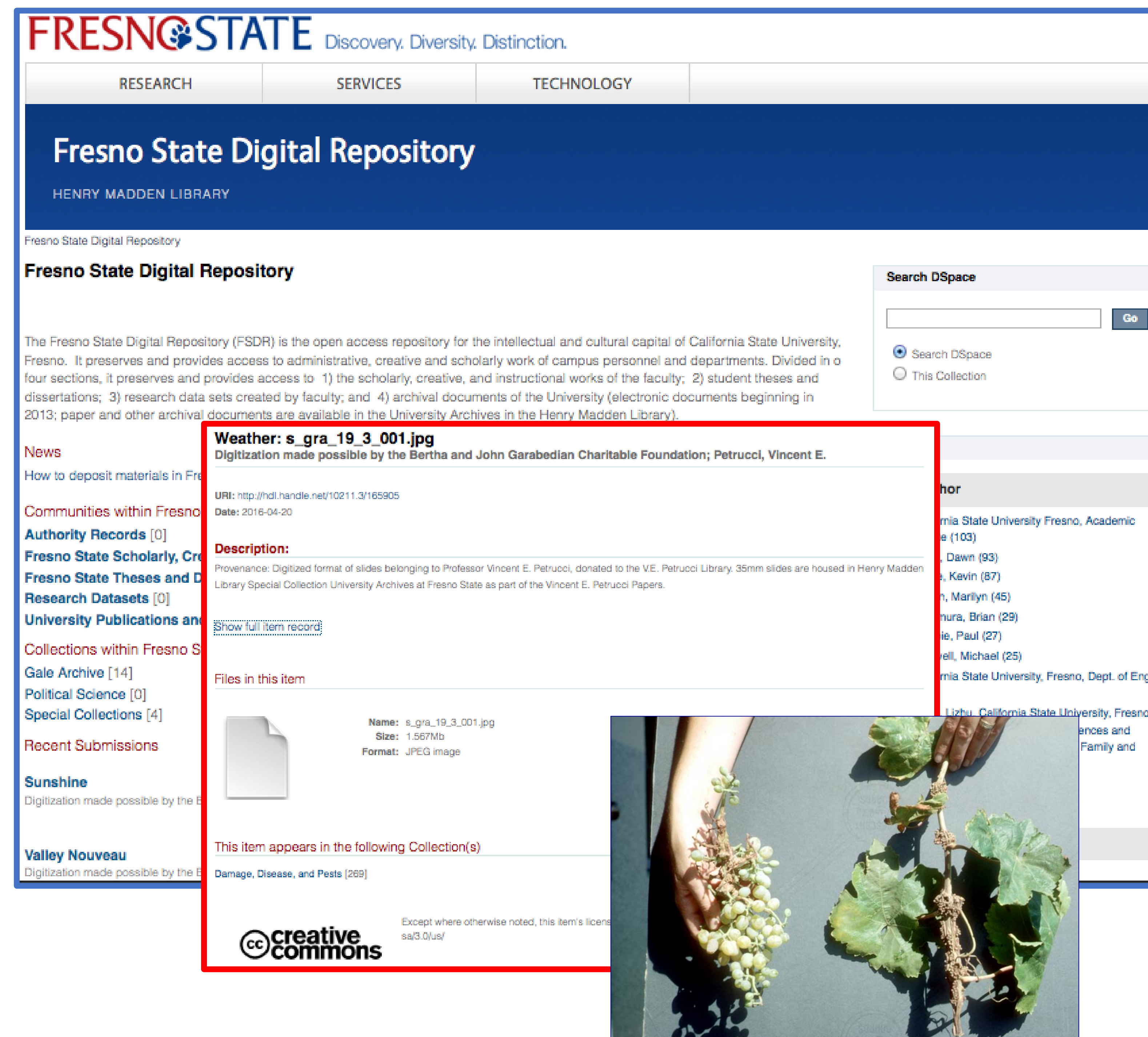
1. Scholarly, creative, and instructional works
2. Fresno State theses and dissertations
3. Research data sets
4. University publications and archival documents

## What types of content?

Scholarly materials and content including preprints, postprints, previously published material (if permitted by publisher policy), working papers, technical reports, presentations, data sets, and instructional or creative works.

Content relevant to the University's history such as speeches, interviews, reports, and campus events are also collected.

repository.library.fresnostate.edu



## Why contribute?

- Increase visibility and access for deposited scholarly/creative works
- Meet funding requirements
- Disseminate your research or creative work as it develops
- Support Open Access and Open Education
- Ensure persistent access and preservation
- Preserve our legacy

## Who can contribute?

- Fresno State faculty can submit scholarly, creative, or instructional materials, and research data sets.
- Any Fresno State organizational unit can submit publications or archival materials.
- Student theses and dissertations will be added to the repository by the Library.

### FSDR Steering Group

Emily Boss    David Drexler (chair)    Renaldo Gjoshe    Jane Magee  
 Carol Doyle    Britt Foster    Tiewei Liu\*    Maria Peña  
 \*contact Tiewei Liu about depositing content    tieweil@csufresno.edu