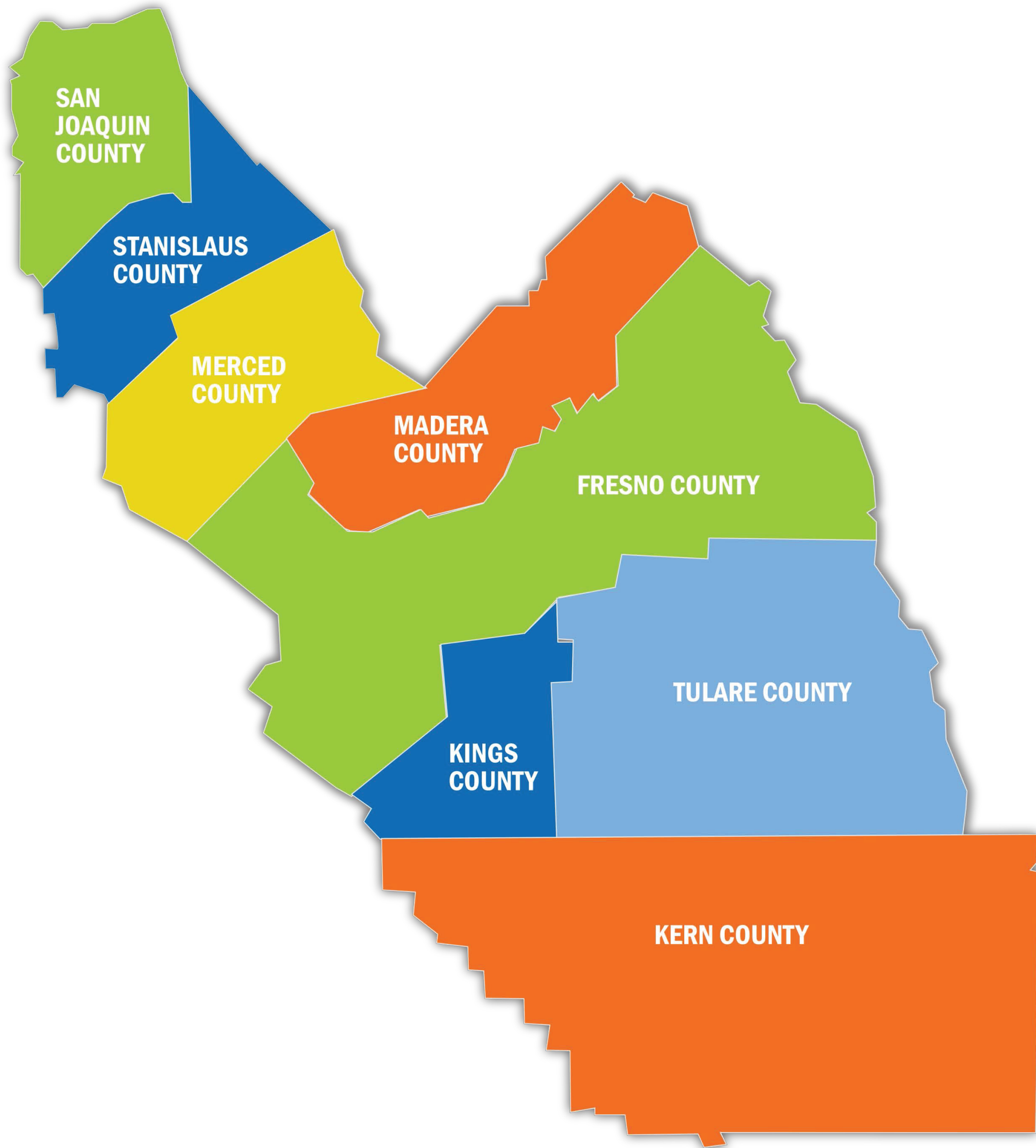




California Partnership for the  
San Joaquin Valley

# Connect, Collaborate, Advocate



## The Region

The eight-county region encompasses 62 cities, extends 250 miles from San Joaquin County in the north to Kern County in the south. The Partnership's mission is to **Connect, Collaborate and Advocate** on a regional scale, to bring together experts and leaders committed to the same purpose - improving quality of life in the San Joaquin Valley.

## California Partnership for the San Joaquin Valley

Formed in June 2005, the Partnership is an unprecedented public-private partnership focused on improving the region's economic vitality and quality of life for the 4 million residents who call the San Joaquin Valley home.

The Partnership is focused on creating a prosperous economy, quality environment, and social equity throughout the San Joaquin Valley via eight regional work groups and seven strategic priorities:

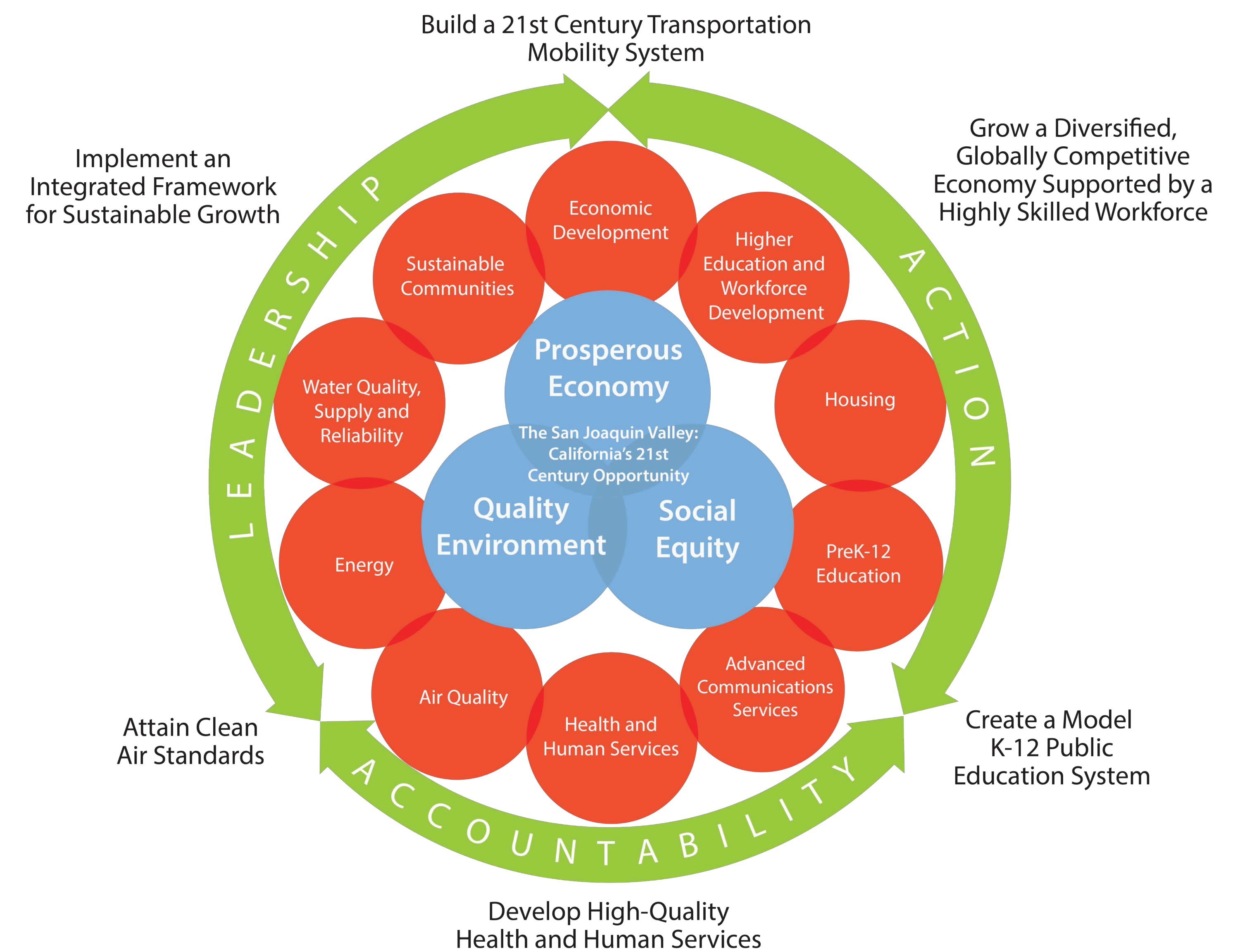
### Work Groups

- Advanced Communications Services
- Air Quality
- Economic Development
- Energy
- Health & Human Services
- Higher Education & Workforce Development
- Housing
- PreK-12 Education
- Sustainable Communities
- Water Quality, Supply & Reliability

### Strategic Priorities

- Broadband
- Greenhouse Gas Reduction Funding
- Health
- Higher Education
- Regional Industry Clusters
- San Joaquin Rail Service
- Water Supply & Quality

## Six Initiatives of the Partnership



A PROGRAM OF:

**FRESNO STATE**  
Community and Economic Development

[www.sjvpartnership.org](http://www.sjvpartnership.org)