

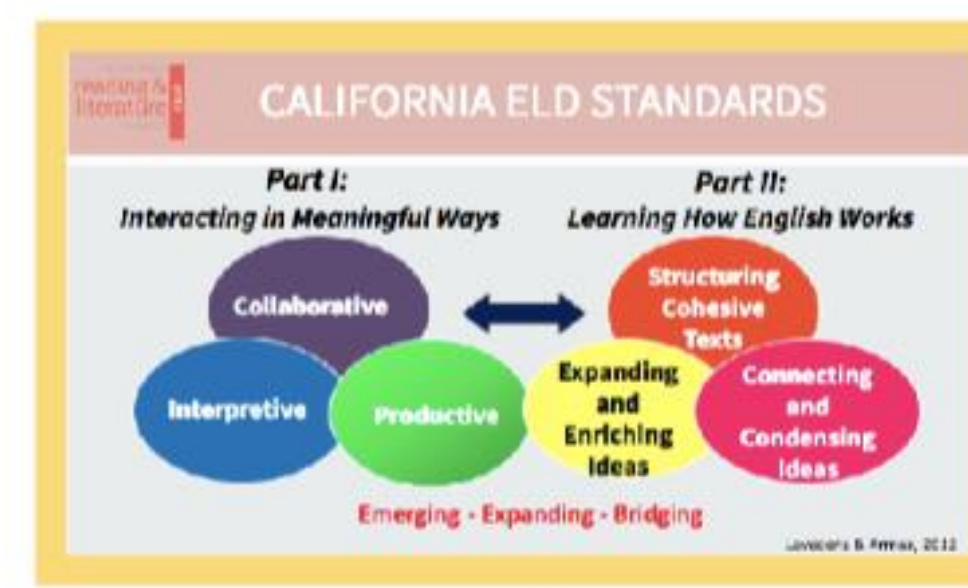
California Reading & Literature Project: Bridging Literacy and Teacher Capacity

Focus One: Provide Supports to Teachers and Leaders of EL Learners

As we worked to develop new partnerships with districts beginning in Fresno, Madera, and Kings/Tulare Counties for professional learning and support SEBT and ADEPT Signature Programs, Learning How English Works, SLD, 61 participants across one district partnership and one network have been impacted in this focal area for the project.

Focus Two: Provide Academic and Disciplinary Supports to Partners

Our collaboration with the SDCOE included Jorge Cuevas Antillón to support the Second Language Development institute, which brought teacher learners from across the state of California for learning: **ELD Standards Pictorial**

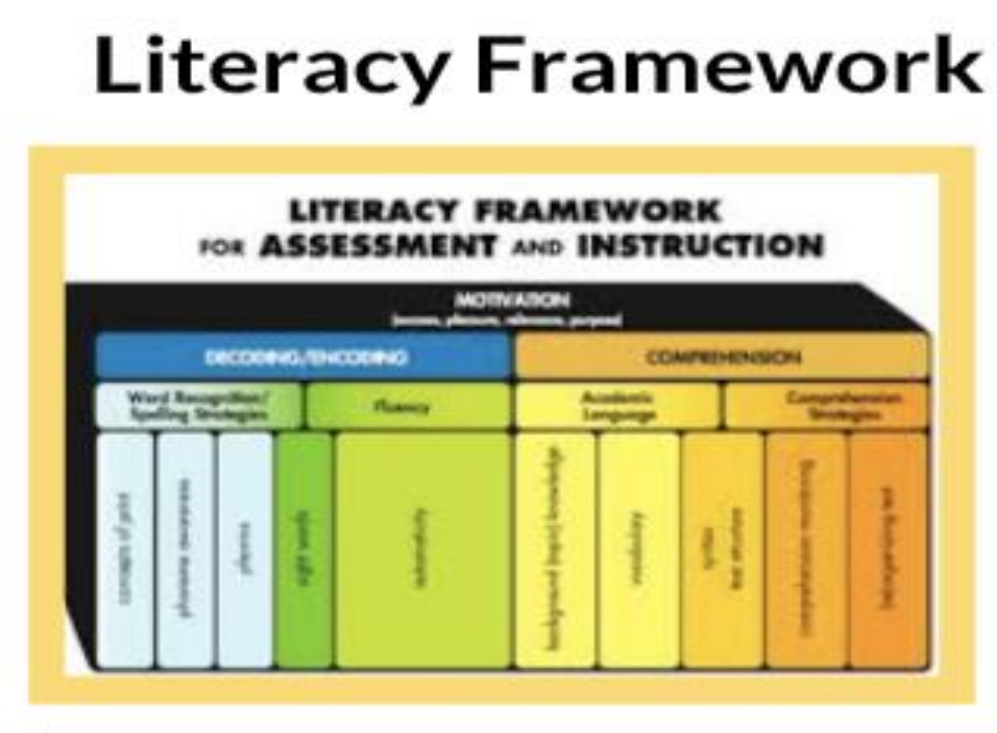
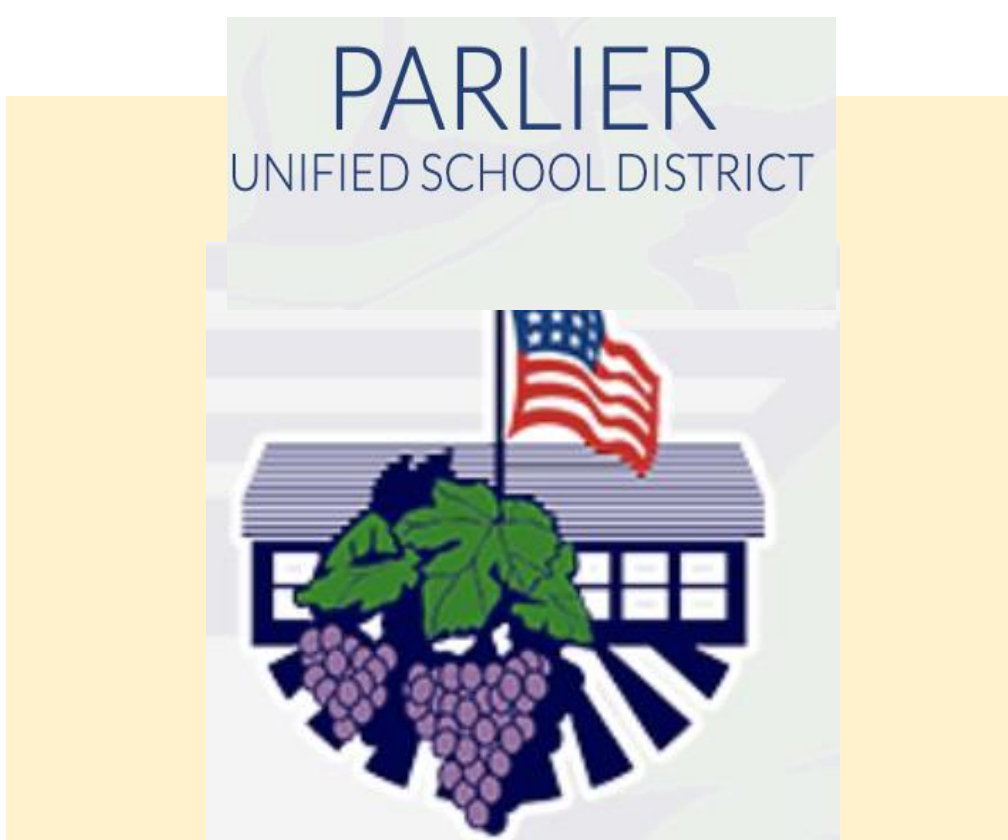


Our webinar series has highlighted work from one faculty member from KSOEHD around Dyslexia and literacy supports. Additionally, we are working with other CRLP Regions and faculty to open conversation around academic, critical and social justice literacy.



Focus Three: Develop Committed Teacher Leaders

Our work this year has included the recruitment of four primary elementary school teachers from Madera with expertise in foundational reading and high capacity to learn and implement RESULTS with an intent to train next year. We have also recruited one teacher leader from Madera who is a current administrator. Two teacher leader recruits from Madera with expertise in DL/EL in grades 5-8 with training and implementation of SLD at their school site/district recently agreed to commit to the work. One current teacher leader has committed to the Learning How English Works institute being used by our CRLP partners to supports English Learners with the English Learner Road Map.



This included a continued district partnership with Parlier Unified in Fresno County for CALL, RALLI and RESULTS training accompanied with technical assistance in the form of follow up classroom. From our work with developing an EL partnership with Parlier, we are providing a RESULTS, CALL and RALLI trainings.. These Institutes are available for other districts, and districts have sent leaders as well. Through intentional contracts we can meet the needs of the rural partners while also allowing for more participants.



Director of CRLP Fresno, Dr. Patty López; PI: Dr. Nichole Walsh

